

INSTALLATION GUIDE

Ice Pans - All Models

Getting Started

1. Download the specification sheet for your specific model.
2. Confirm availability of a drain pan or floor drain.
3. Authenticate the countertop material manufacturer's instructions for proper installation of equipment into their material.
4. Make certain that countertop surface is level.
5. Unpack and clean equipment. Remove all packing material, tape, plastic and residue.

Countertop and Cabinet Fabrication

1. Cut an opening in the countertop per cutout dimensions. See spec sheet.
2. Provide reinforcement to the countertop from below to support the weight of the equipment.

Mounting the Drop-In

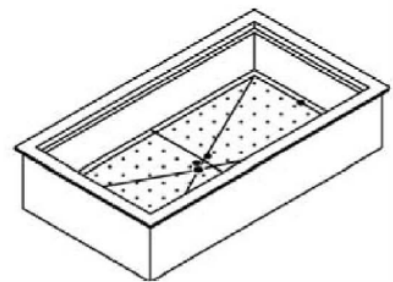
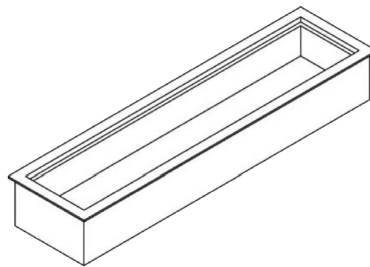
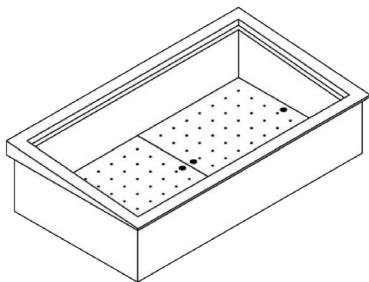
1. Apply silicone sealant to the underside of the mounting flange.
2. Install equipment in the cutout opening and clean off any extra sealant.

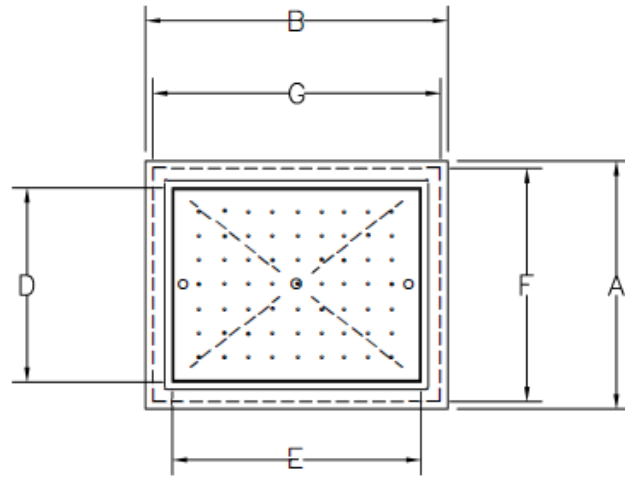
Wiring & Plumbing Instructions

1. Install drain valve with handle (provided). Connect 1" drain to drain pan or floor drain. Position valve handle for easy access. All plumbing specifications and drain connections must comply with local code.

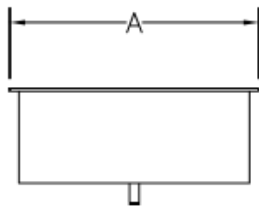
Notes:

1. No clearance specifications required for Ice Pans
2. No electrical connections required

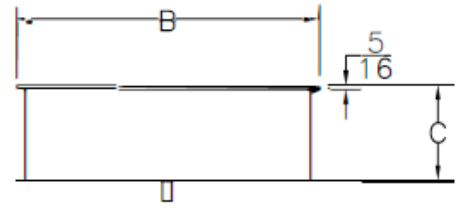




PLAN VIEW



SIDE ELEVATION



FRONT ELEVATION

Specifications

ICP ice pans							
	Overall Dimentions			Interior Dimentions		Cut Out Dimentions	
	Front to Back A	Left to right B	Height C	Front to Back D	Left to right E	Front to back F	Left to right G
	inches	inches	inches	inches	inches	inches	inches
ICP 100	25 3/8	17 3/8	9 3/4	19 7/8	11 7/8	23 7/8	15 7/8
ICP-200	25 3/8	31	9 3/4	19 7/8	25 1/2	23 7/8	29 1/2
ICP-300	25 3/8	44 3/4	9 3/4	19 7/8	39 1/4	23 7/8	43 1/4
ICP-400	25 3/8	58 1/2	9 3/4	19 7/8	53	23 7/8	57
ICP-500	25 3/8	72 1/4	9 3/4	19 7/8	66 3/4	23 7/8	70 3/4
ICP-600	25 3/8	86	9 3/4	19 7/8	80 1/2	23 7/8	84 1/2
ICP 100 ST	25 3/8	17 3/8	12	19 7/8	11 7/8	23 7/8	15 7/8
ICP-200 ST	25 3/8	31	12	19 7/8	25 1/2	23 7/8	29 1/2
ICP-300 ST	25 3/8	44 3/4	12	19 7/8	39 1/4	23 7/8	43 1/4
ICP-400 ST	25 3/8	58 1/2	12	19 7/8	53	23 7/8	57
ICP-500 ST	25 3/8	72 1/4	12	19 7/8	66 3/4	23 7/8	70 3/4
ICP-600 ST	25 3/8	86	12	19 7/8	80 1/2	23 7/8	84 1/2
ICP-200 SL	17 3/8	46 1/4	9 3/4	11 7/8	40 3/4	15 7/8	44 3/4
ICP-300 SL	17 3/8	67	9 3/4	11 7/8	61 1/2	15 7/8	65 1/2
ICP-400 SL	17 3/8	87 3/4	9 3/4	11 7/8	82 1/4	15 7/8	86 1/4